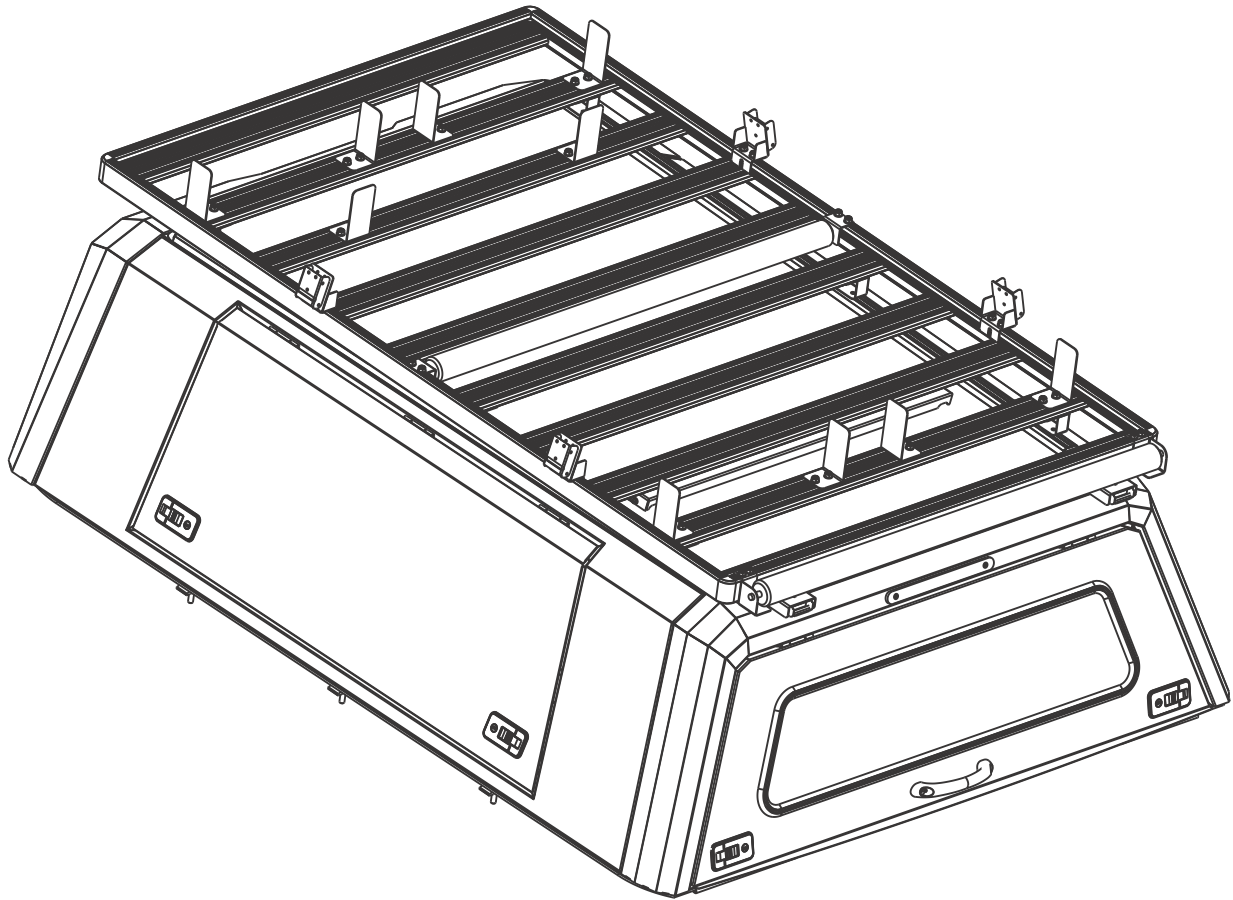




## Roller Rack Installation Guide



**FOLLOW INSTRUCTIONS CAREFULLY TO AVOID ANY DAMAGE TO YOUR SMARTCAP PRODUCT OR YOUR VEHICLE**

**IF YOU HAVE QUESTIONS OR CONCERNS, PLEASE DO NOT HESITATE TO CONTACT US AT:**

SUPPORT.NA@RSISMARTCAP.COM - NORTH AMERICA

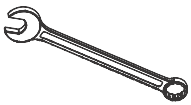
[SUPPORT.SA@SMARTCAP.COM](mailto:SUPPORT.SA@SMARTCAP.COM) - INTERNATIONAL/SOUTH AFRICA



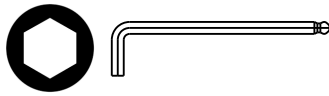
# TABLE OF CONTENTS

REQUIRED TOOLS .....	2
HARDWARE .....	4
ASSEMBLY INSTRUCTIONS .....	5-10
FITMENT INSTRUCTIONS .....	11
SUPPORT DETAILS .....	11

## REQUIRED TOOLS



Spanner Set  
13mm Flat



Allen Key Set  
5mm & 2.5mm



Tape  
Measure

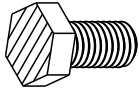


### WARNING

- USE ONLY THE TOOLS RECOMMENDED IN THIS GUIDE
- USE ONLY THE HARDWARE THAT HAS BEEN PROVIDED
- HANDLE ALL COMPONENTS WITH CARE
- NEVER USE ACETONE ON THE PAINTWORK
- AVOID PINCHING/SQUASHING HANDS

# HARDWARE

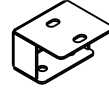
## RACK ASSEMBLY



**12X** M8 X 16  
MACHINE SET SCREWS

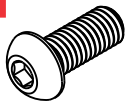


**12X** M8  
NYLOC NUTS



**6X** MOUNTING  
FEET

**ST**

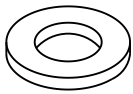


**20X** M8 X 20 BUTTON  
HEAD SCREW

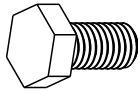
**SB**



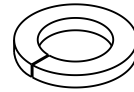
**18X** M8 X 20 BUTTON  
HEAD SCREW



**24X** M8  
FLAT WASHERS



**12X** M8 X 16  
SET SCREWS



**12X** M8  
SPRING WASHER

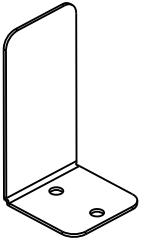


**12X** M8  
WELD NUTS

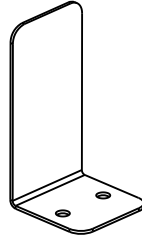
**NB: Please Note That.**  
**SB Contractors Racks Utilises 9 X Load Bars.**  
**ST Contractors Rack Utilises 10 X Load Bars.**

# CONTRACTOR KIT

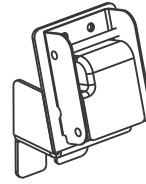
## HARDWARE



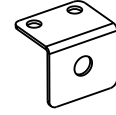
**8X** HORIZONTAL STOPPERS



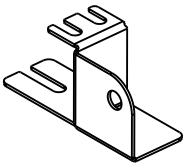
**2X** VERTICAL STOPPERS



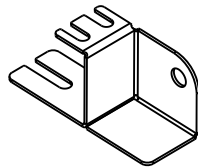
**4X** TIE DOWN STRAPS



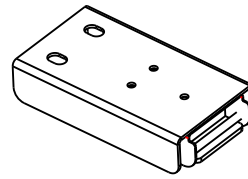
**2X** MIDDLE ROLLER BRACKET



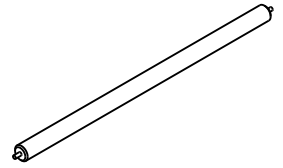
**1X** REAR ROLLER BRACKET LHS



**1X** REAR ROLLER BRACKET RHS

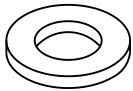


**2X** REAR STRAP BRACKETS

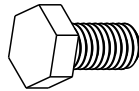


**2X** RUBBER ROLLER

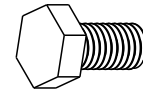
## CONTRACTORS RACK FITMENT KIT



**42X** M8 FLAT WASHERS



**40X** M8 X 16 SET SCREWS



**6X** M8 MACHINED SCREWS

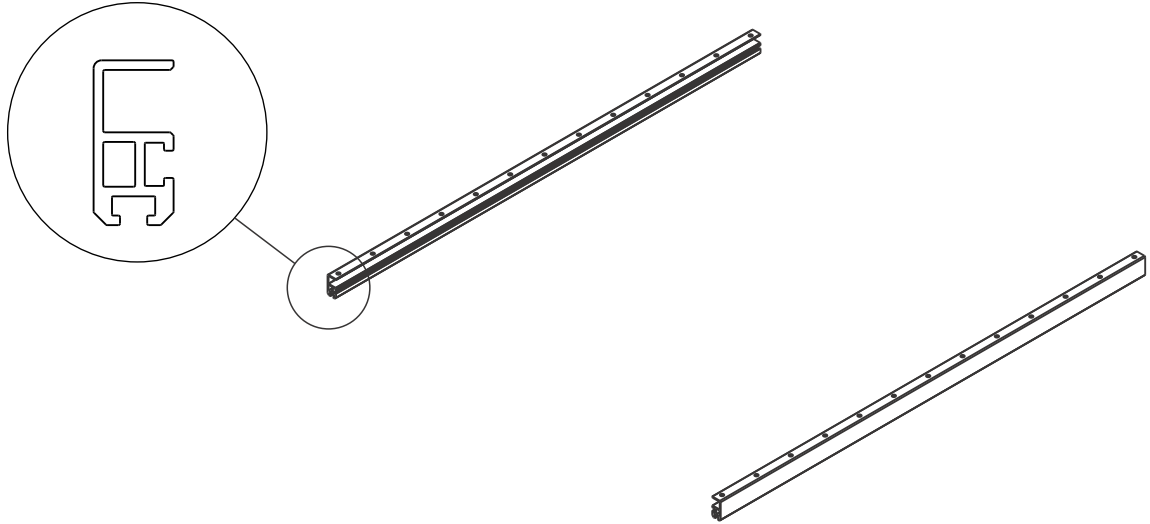


**46X** M8 NYLOC NUTS

# ASSEMBLY OF THE SMARTCAP ACCESSORY

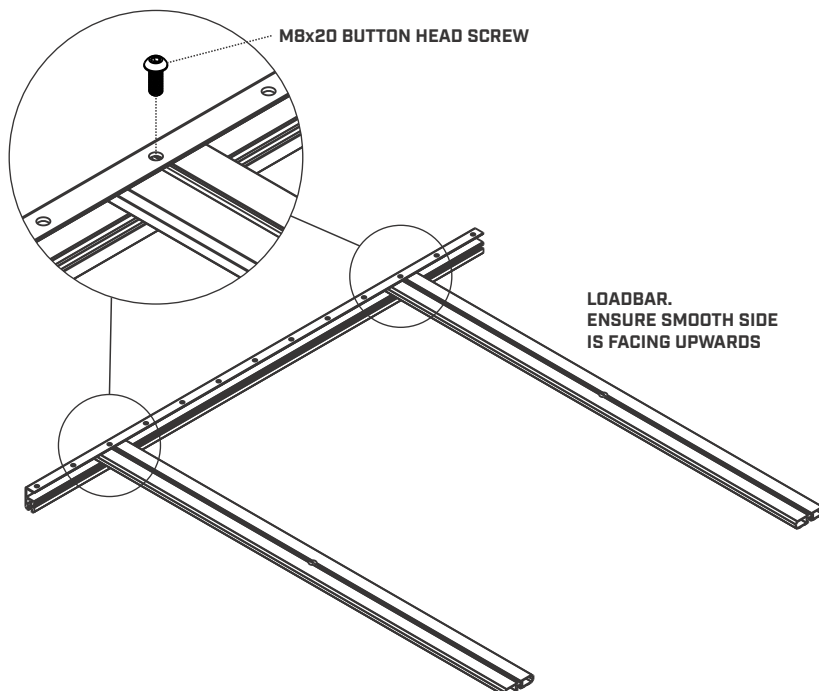
## STEP ONE

1. LAY DOWN SIDE RAIL UPSIDE DOWN



## STEP TWO

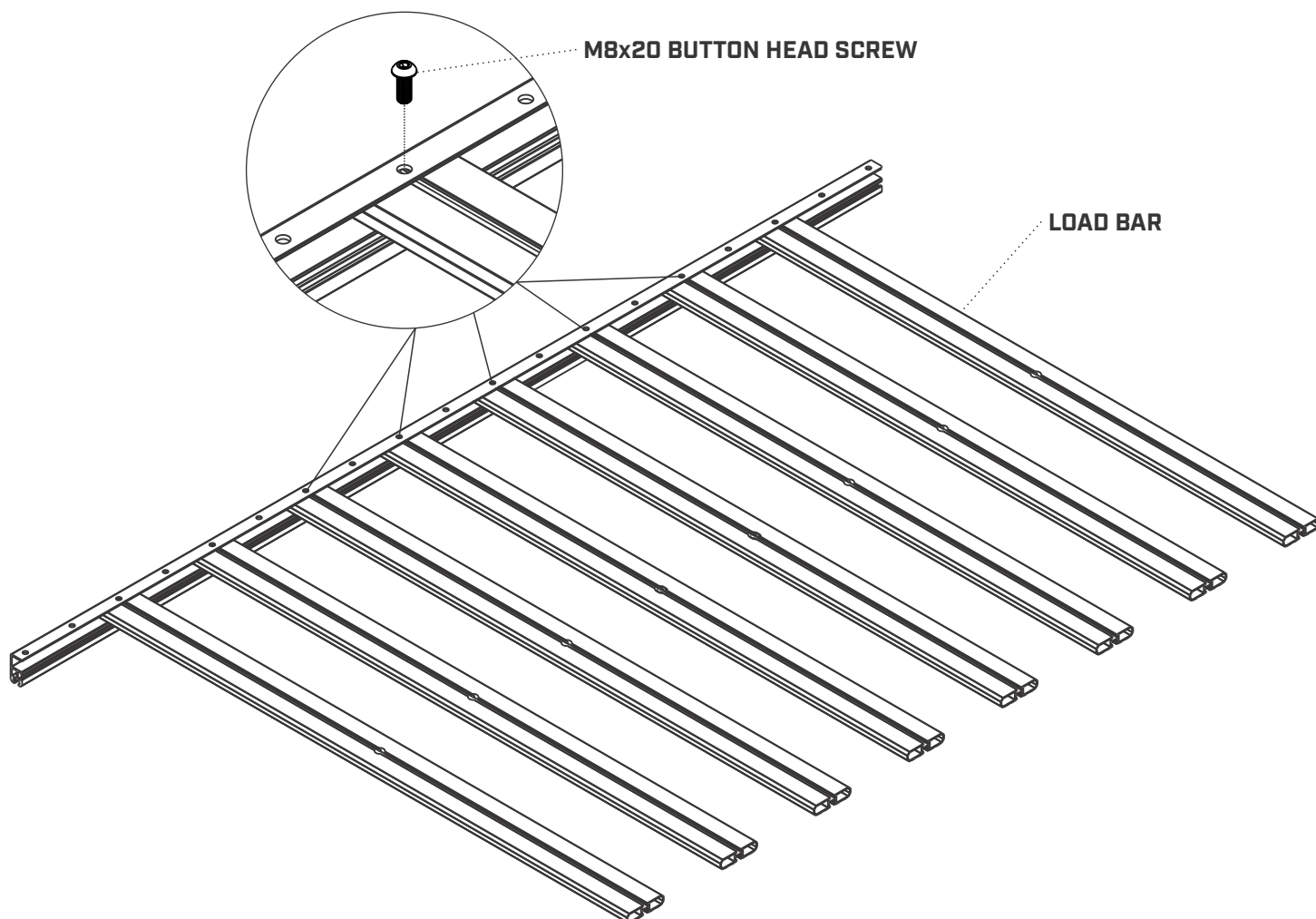
1. FIT LOAD BARS TO SIDE RAILS, ENSURE TO START WITH THE 3RD HOLE INBOARD FROM THE SIDE RAILS.  
2. TIGHTEN BUTTON HEAD SCREW USING 5MM ALLEN KEY



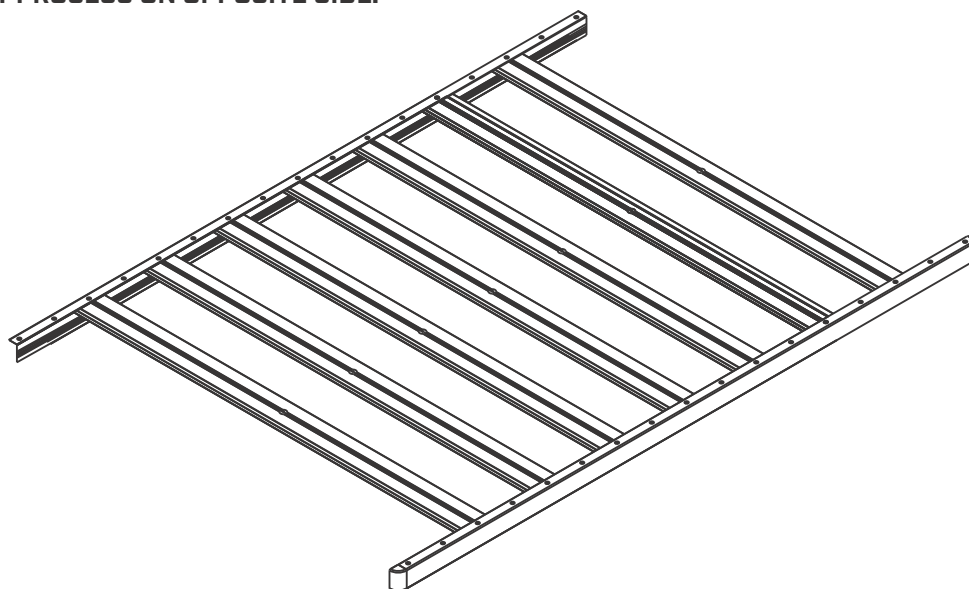
# ASSEMBLY OF THE SMARTCAP ACCESSORY

## STEP THREE

1. FIT THE LOADBARS AS DEPICTED BY THE IMAGE BELOW.  
[FOR SB PLATFORM RACKS, ASSEMBLE 9 LOAD BARS]  
[FOR ST PLATFORM RACKS, ASSEMBLE 10 LOAD BARS]



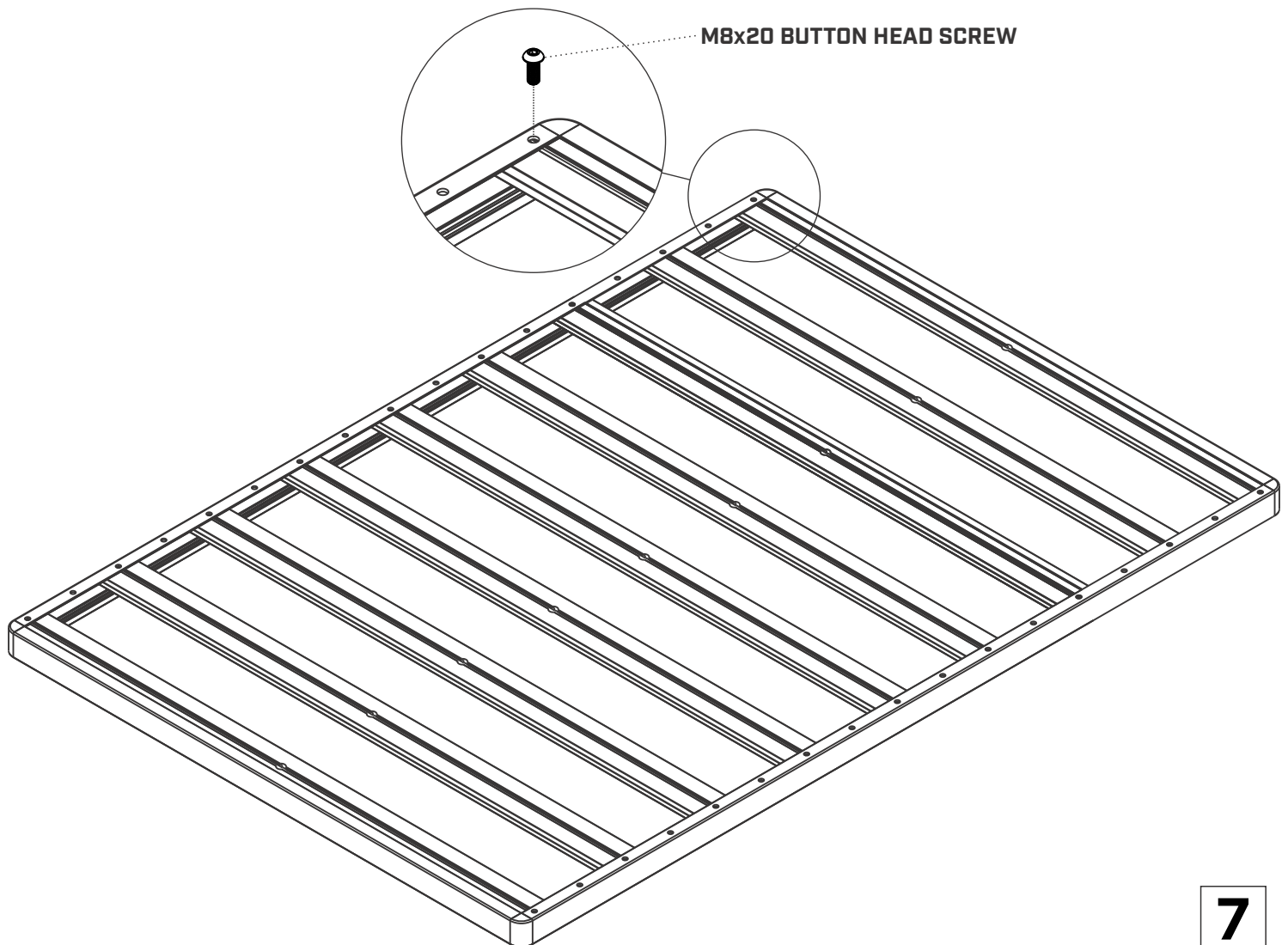
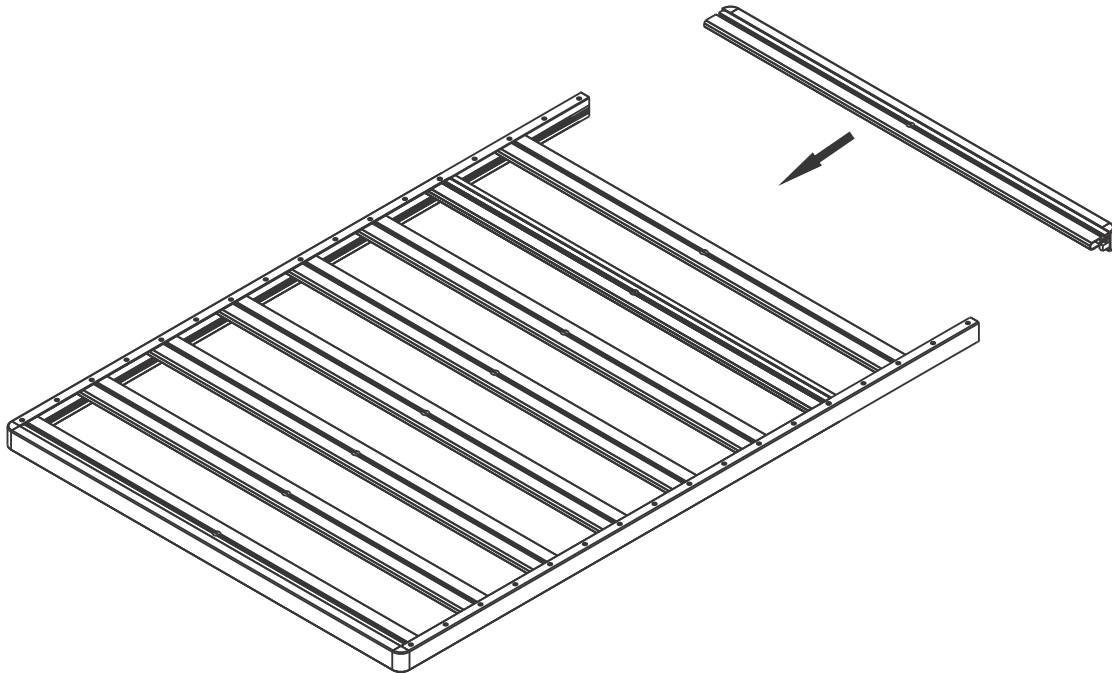
REPEAT PROCESS ON OPPOSITE SIDE.



# ASSEMBLY OF THE SMARTCAP ACCESSORY

## STEP FOUR

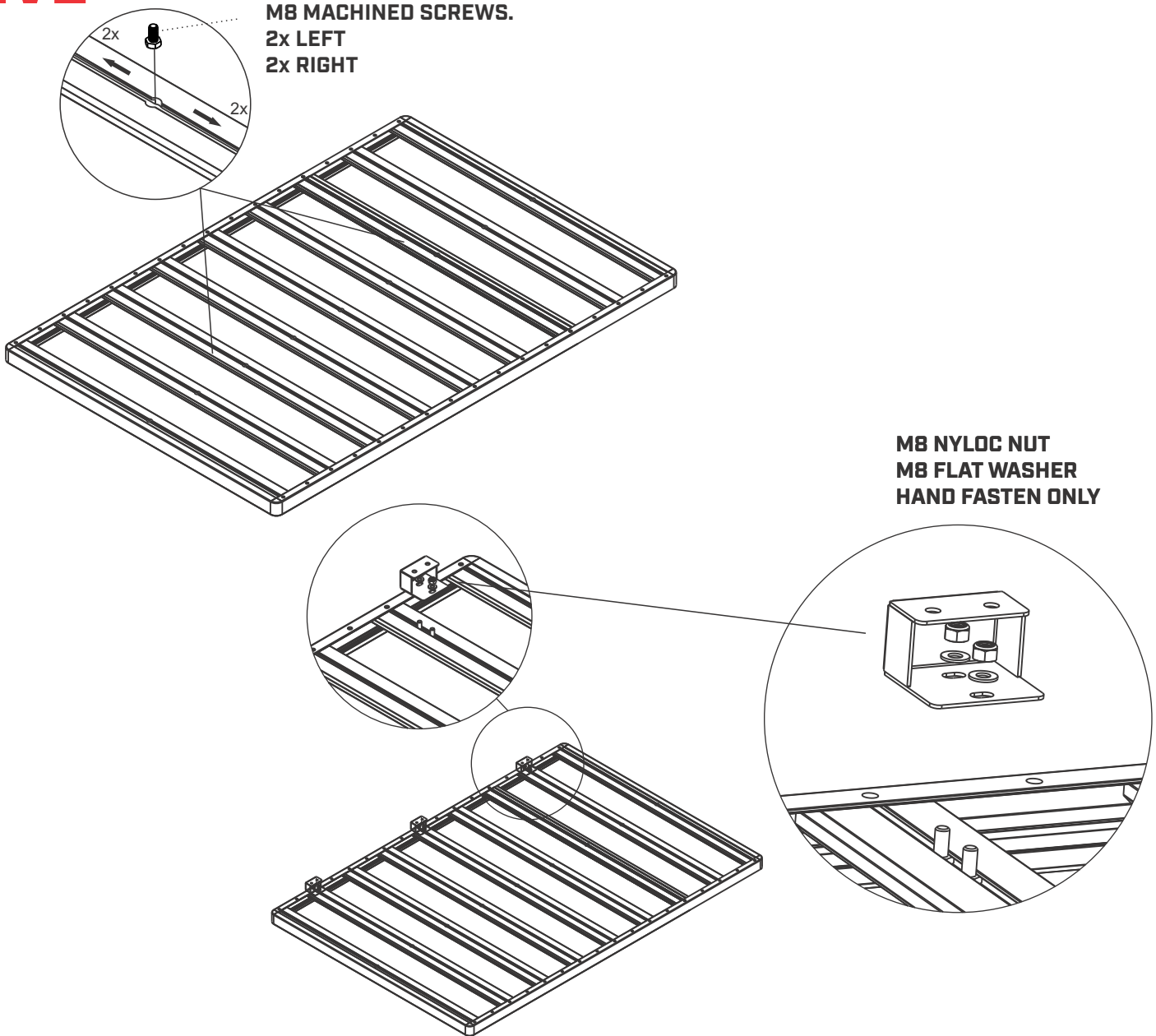
1. FIT THE ENDS ON AND FASTEN IN PLACE.



# ASSEMBLY OF THE SMARTCAP ACCESSORY

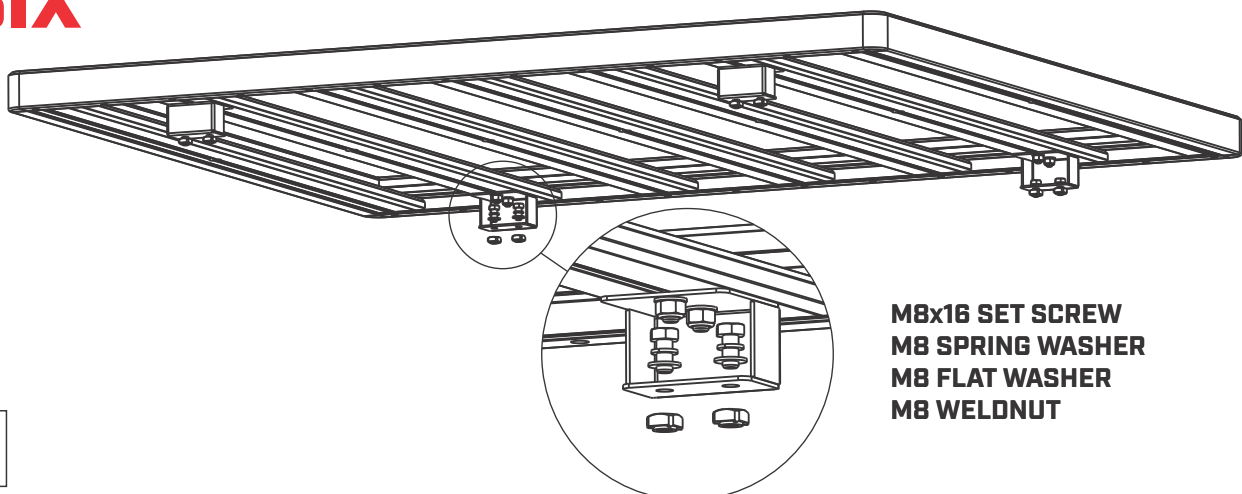
## STEP FIVE

1. FIT THE MACHINED BOLTS INTO THE BOTTOM SLOT OF THE LOADBAR AS DEPICTED IN THE IMAGE BELOW.
2. HAND FASTEN THE MOUNTING FEET ONTO THE PLATFORM RACK



## STEP SIX

1. FIT THE HARDWARE ONTO THE MOUNTING FEET.





# FITMENT OF THE SMARTCAP ACCESSORY

## STEP SEVEN

1. FIT M8 SET SCREW INTO THE TOP SLOT OF THE LOAD BAR, AS DEPICTED IN THE IMAGE BELOW. (SEE FIGURE 1)
2. ALL STOPPER BRACKETS CAN BE ADJUSTED TO SUIT YOUR REQUIRED NEEDS.
3. FASTEN THE STOPPER BRACKETS USING THE SEQUENCE DEPICTED. (SEE FIGURE 2)
4. AS DEPICTED IN THE IMAGE BELOW IT IS RECOMMENDED FOR TWO LADDERS.

FIGURE 1

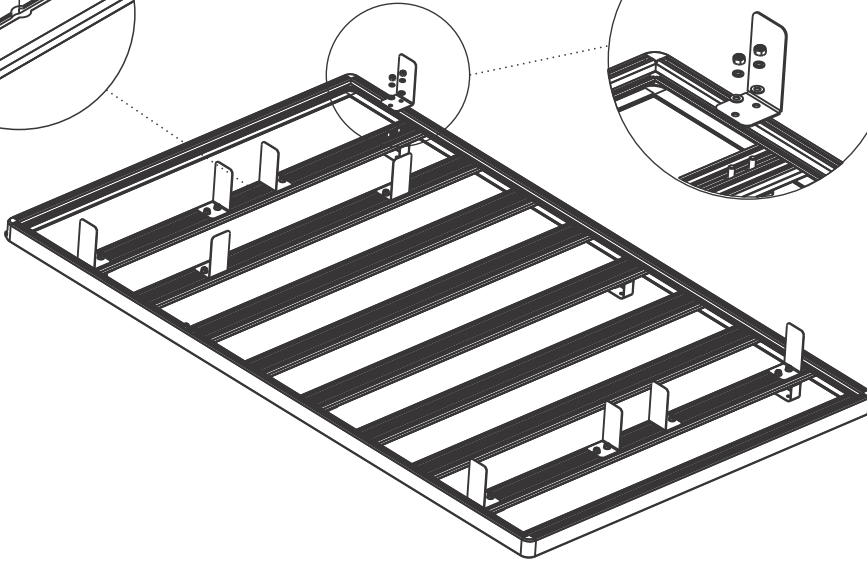
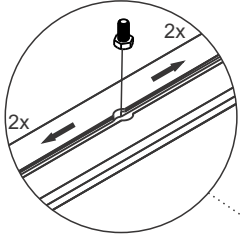


FIGURE 2

M8x16 SET SCREW  
M8 FLAT WASHER  
M8 WELDNUT

## STEP EIGHT

1. FIT M8 SET SCREW INTO LOAD BARS AS DEPICTED IN THE IMAGE BELOW. (SEE FIGURE 1)
2. FASTEN THE STRAP BRACKETS USING THE SEQUENCE DEPICTED. (SEE FIGURE 2)
3. ALL STRAP BRACKETS CAN BE ADJUSTED TO SUIT YOUR REQUIRED NEEDS.

FIGURE 1

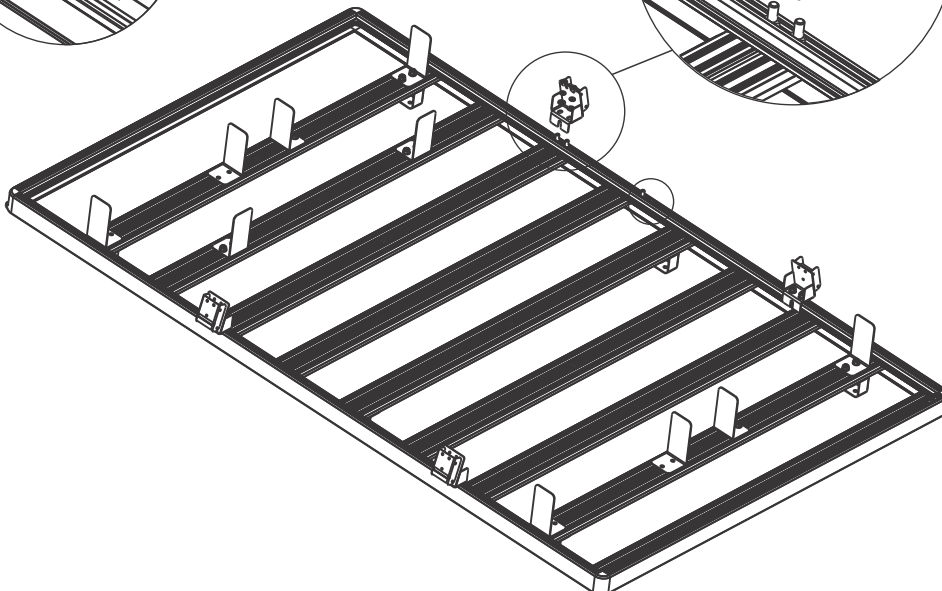
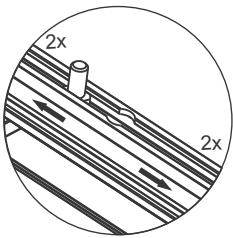


FIGURE 2

M8 NYLOC NUT  
M8 FLAT WASHER  
M8x16 SET SCREW

# FITMENT OF THE SMARTCAP ACCESSORY

## STEP NINE

### CENTER ROLLER

1. SLIDE M8 SET SCREW AS SHOWN IN FIGURE 1.
2. USE FASTENING SEQUENCE AS SHOWN IN FIGURE 3.
3. CENTER ROLLER CAN BE ADJUSTED TO REQUIRED POSITIONS, RECOMMENDED POSITIONED SHOWN BELOW.

### REAR ROLLER

1. SLIDE M8 SET SCREW AS SHOWN IN FIGURE 2.
2. REAR ROLLER BRACKET TO SLIDE OVER THE REAR LOAD BAR.
3. USE FASTENING SEQUENCE AS SHOWN IN FIGURE 4.

**NB. NOTE ROLLERS ARE SPRING LOADED.**

FIGURE 1

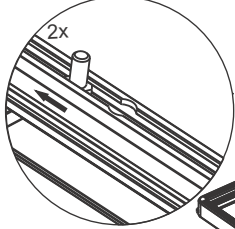
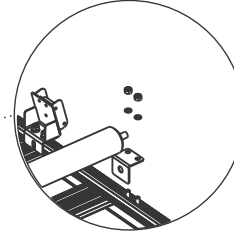


FIGURE 3



M8 NYLOC NUT  
M8 FLAT WASHER  
M8x16 SET SCREW

FIGURE 2

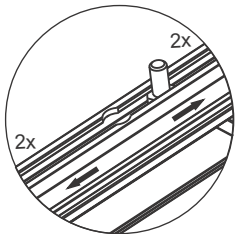
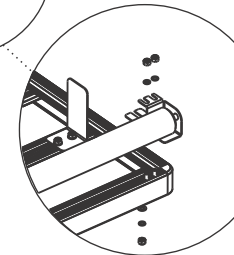


FIGURE 4

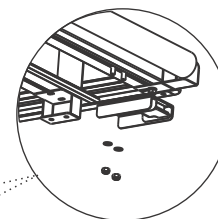


M8 NYLOC NUT  
M8 FLAT WASHER  
M8x16 SET SCREW

## STEP TEN

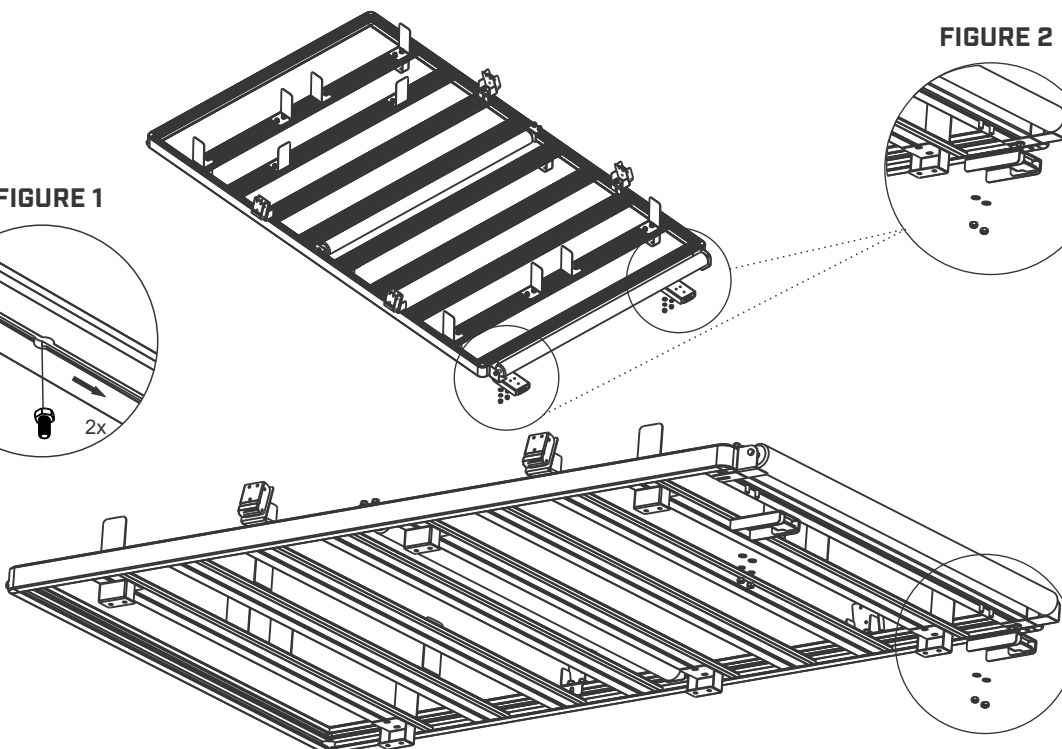
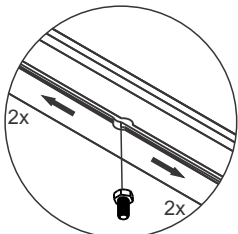
1. SLIDE IN M8 SET SCREW IN THE BOTTOM OF THE LOAD BAR. (SEE FIGURE 1)
2. USE FASTENING SEQUENCE AS SHOWN IN FIGURE 2.

FIGURE 2



M8x16 SET SCREW  
M8 FLAT WASHER  
M8 NYLOC NUT

FIGURE 1

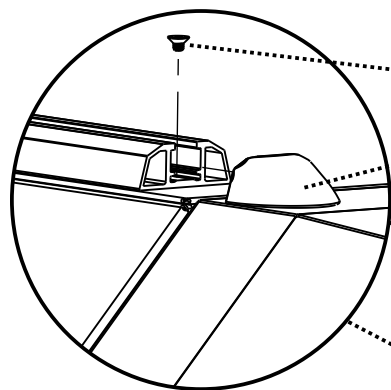


M8x16 SET SCREW  
M8 FLAT WASHER  
M8 NYLOC NUT

# FITMENT OF THE SMARTCAP ACCESSORY

## STEP ELEVEN

1. REMOVE REAR ROOF END CAPS USING 2.5MM ALLEN KEY.
2. SLIDE THE WELDNUTS INTO THE RAIL.
3. DO THIS TO BOTH FRONT AND REAR.
4. CENTRALISE CONTRACTORS RACK ON ROOF RAILS USING A MEASURING TAPE.
5. TIGHTEN ALL HARDWARE USING 13MM SPANNER.
6. RE-FIT ROOF END CAPS.



CSK SCREW SUPPLIED WITH ROOF RAIL

ROOF RAIL ENDCAP

